



SUPPLEMENT TO

**REPORT ON FOLLOW-UP ASSESSMENT OF LABOUR
MARKET OUTCOMES AMONG BENEFICIARIES IN THE
THREE EGF CONSTRUCTION PROGRAMMES (NACE 41,
NACE 43 AND NACE 71)**

prepared for

**EGF Managing Authority
Department of Education and Skills**

by the

**EGF Administrative and Technical Support Unit
(WRC Social and Economic Consultants)**

April 2014 (Revised)

Table of Contents

1	Introduction	1
2	Methodology and Data Sources	1
3	Labour Market Status of Beneficiaries	2
4	Labour Market Status of Non-Beneficiaries and Beneficiaries	4

List of Figures

Figure 1	Labour Market Status of Beneficiaries of the NACE 41 Construction Programme in April 2010, November 2012 and March 2013	2
Figure 2	Labour Market Status of Beneficiaries of the NACE 43 Construction Programme in April 2010, November 2012 and March 2013	3
Figure 3	Labour Market Status of Beneficiaries of the NACE 71 Construction Programme in April 2010, November 2012 and March 2013	3
Figure 4	Labour Market Status of Non-Beneficiaries and Beneficiaries in the NACE 41 Programme in March 2013	5
Figure 5	Labour Market Status of Non-Beneficiaries and Beneficiaries in the NACE 43 Programme in March 2013	5
Figure 6	Labour Market Status of Non-Beneficiaries and Beneficiaries in the NACE 71 Programme in March 2013	6

List of Annexes

ANNEX 1	Labour Market Status of Beneficiaries in April 2010, November 2012 and March 2013	7
ANNEX 2	Labour Market Status of Non-Beneficiaries and Beneficiaries in March 2013	8

Note on Number of Beneficiaries

It should be noted that the number of beneficiaries identified in this report includes 13 beneficiaries not previously identified in the Final Reports to the European Commission on the 7th December 2012 (i.e. 10 additional in NACE 41 and 3 additional in NACE 43). The updated figures are presented in the table below. Consequently, and also given the inclusion of data from both the Department of Social Protection and Revenue, the findings presented in this report represent the most accurate estimates of the outcomes from the three EGF Construction Programmes.

Number of Beneficiaries and Non-beneficiaries in the Three EGF Construction Programmes (Revised)

	NACE 41		NACE43		NACE 71	
	N	%	N	%	N	%
Beneficiaries	2,962	65.8	1,988	74.0	490	60.0
Non-beneficiaries	1,542	34.2	700	26.0	326	40.0
Total Eligible	4,504	100.0	2,688	100.0	816	100.0

1 Introduction

This report examines the labour market status of beneficiaries in the three EGF supported Construction Programmes that concluded on the 9th June 2012. The programmes covered three sectors of the construction industry:

- construction of buildings – NACE 41;
- specialised construction services – NACE 43; and,
- architectural and engineering services – NACE 71.

The data presented here are part of a follow-up analysis of the outcomes of the three EGF supported Construction Programmes. This report supplements and updates a previous report titled *Report on Follow-up Assessment of Labour Market Outcomes Among Beneficiaries in the Three EGF Construction Programmes (NACE41, NACE 43 and NACE 71)* by using data from both the Department of Social Protection (DSP) and Revenue to determine the market status of beneficiaries in March 2013 - just over nine months following completion of the Programmes. For comparative purposes estimates of the labour market status of beneficiaries and non-beneficiaries are presented for March 2013.

2 Methodology and Data Sources

The methodology used to assess the labour market outcomes achieved by beneficiaries of the three EGF Construction Programmes in this report involved cross-referencing data from the DSP and Revenue.

Data on the welfare status of all 8,008 EGF eligible persons were provided by the DSP in respect of their status on the 22nd March 2013. These data enabled the identification of persons in receipt of unemployment related payments (i.e. JA and JB), persons on active labour market programmes (e.g. BTEA and Internships), persons in receipt of other welfare payments (e.g. One Parent Payments, Farm Assist), and persons engaged in casual employment or in employment and receiving Family Income Supplement. While persons “not listed” in the DSP data file do not have an active claim with the DSP, this does not indicate that they are in employment. Data from Revenue identified the employment status of eligible persons on 22nd March 2013 and were used in conjunction with DSP data to identify persons in employment and persons not in employment.

The indicators of labour market status derived from the cross-referenced data are the proportions of persons in employment, unemployed, on an active labour market programmes (ALMP), and “Other”. The latter category mainly includes

persons identified as “not listed” in DSP data and not employed in Revenue data. It also includes a small number of persons in receipt of welfare payments such as One Parent Payment and Farm Assist. It is also likely to include persons who have emigrated as these would not appear in either of the data sources used.

3 Labour Market Status of Beneficiaries

Figures 1 to 3 show the labour market status of beneficiaries of the three EGF supported Construction Programmes (i.e. NACE 41, NACE 43 and NACE 43) at three points in time: April 2010 (following the end of the reference period for the Programmes), November 2012 (five months following completion of the Programmes), and March 2013 (nine months following completion of the Programmes). The data underlying the figures are presented in Annex 1.

In respect of each of the three Programmes there is clear evidence of increases in the proportion of beneficiaries in employment following on from programme implementation, with limited further increases in the proportion in employment subsequently. The proportion of beneficiaries in employment in March 2013 is similar in all three Programmes (i.e. 46.0% in NACE 41, 43.3% in NACE 43, and 45.3% in NACE 71).

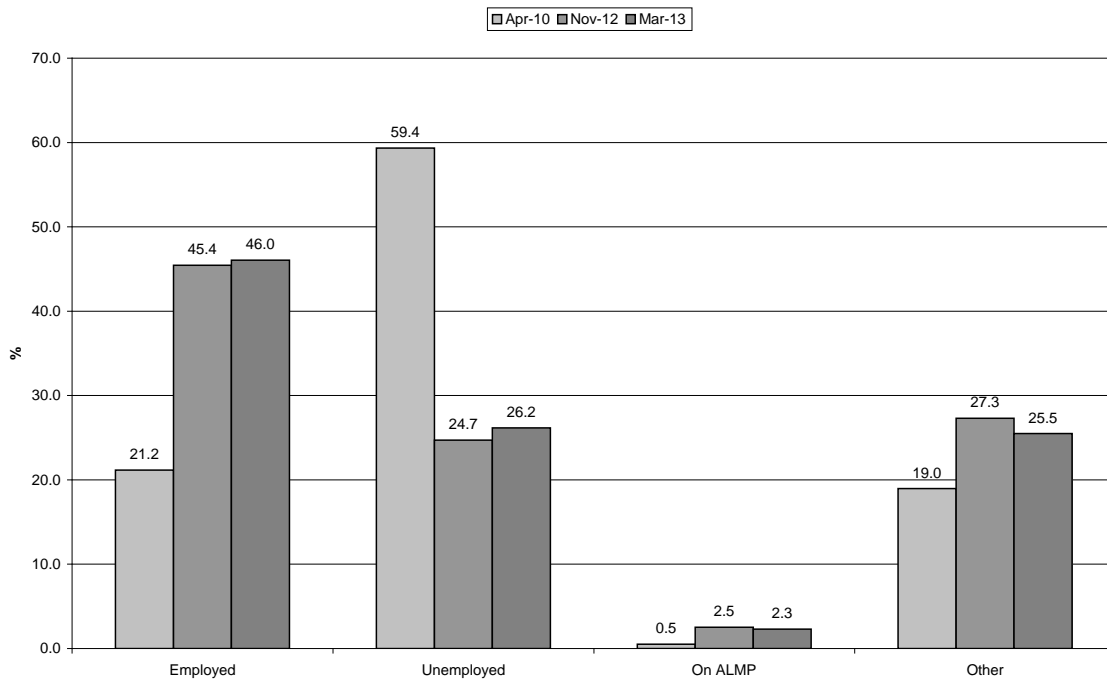


Figure 1 Labour Market Status of Beneficiaries of the NACE 41 Construction Programme in April 2010, November 2012 and March 2013

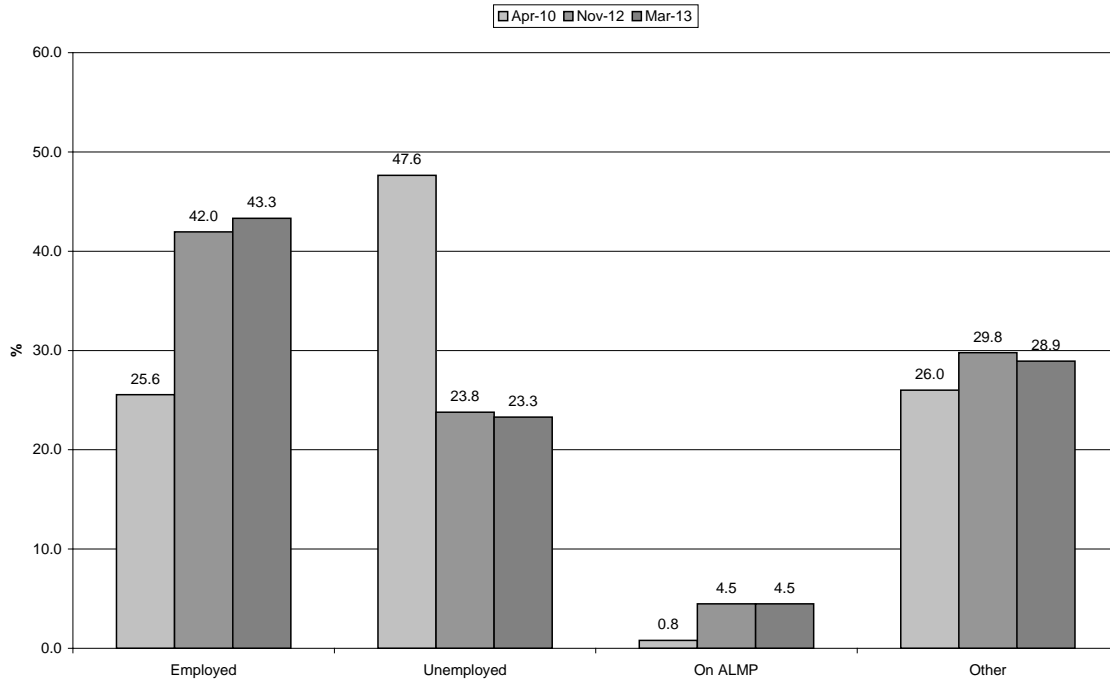


Figure 2 Labour Market Status of Beneficiaries of the NACE 43 Construction Programme in April 2010, November 2012 and March 2013

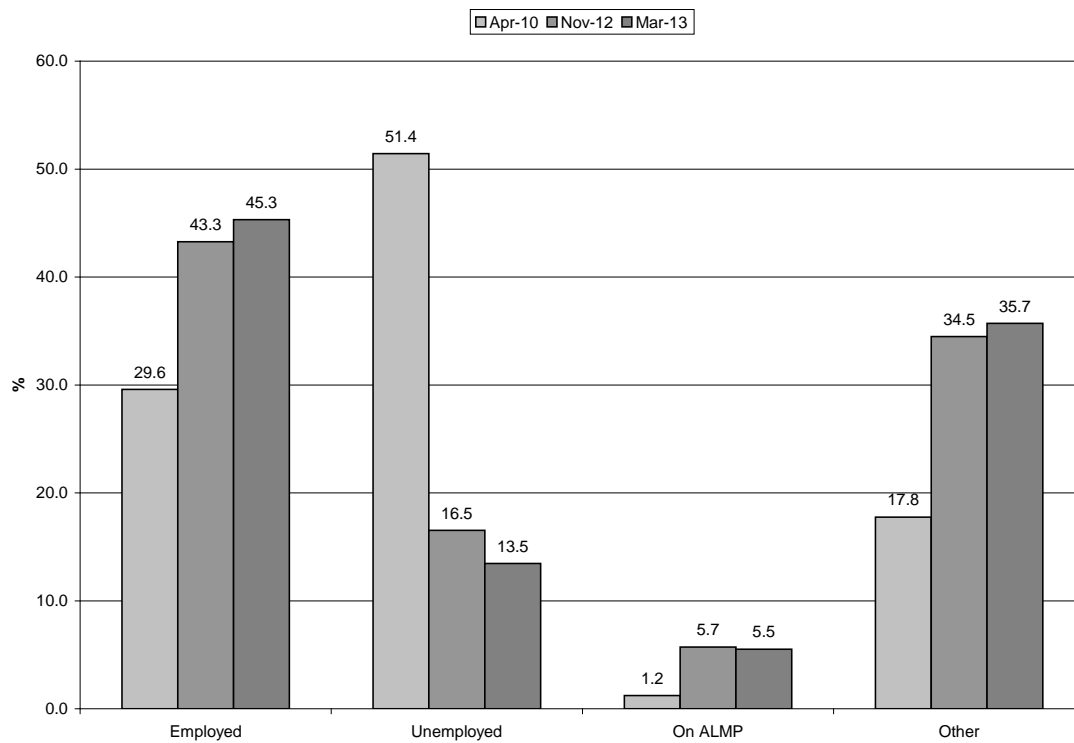


Figure 3 Labour Market Status of Beneficiaries of the NACE 71 Construction Programme in April 2010, November 2012 and March 2013

The trend in employment is reflected in the decreases in the proportions unemployed: these occurred mainly between April 2010 and November 2012, with limited changes over the subsequent months to March 2013. What is notable in this regard, however, is that the proportion of beneficiaries unemployed in March 2013 is substantially higher among beneficiaries in the NACE 41 and NACE 43 Programmes (26.2% and 23.3% respectively) than in the NACE 71 Programme (13.5%).

The main trend in respect of participation in ALMPs is that only small proportions of beneficiaries were engaged in these in November 2012 and in March 2013, with the lowest proportion being found in the NACE 41 Programme (i.e. 2.3% in March 2013) and the highest proportion being found in the NACE 71 Programme (i.e. 5.5% in March 2013).

As noted above, the category “Other” mainly includes persons whose labour market status is not identifiable on the basis of the two datasets available. It can be inferred, however, that the composition of this group of beneficiaries will include persons no longer active in the labour market as well as persons who have emigrated. Looking at the figures presented in Figures 1 to 3 it is clear that, while the proportions of beneficiaries categorised as “Other” did not vary much over time in the case of the NACE 41 and NACE 43 Programmes, it doubled (from 17.8% in April 2010 to 35.7% in March 2012) among beneficiaries in the NACE 71 Programme. At least a proportion of the increase is likely to reflect emigration among beneficiaries in the NACE 71 Programme.

4 Labour Market Status of Non-Beneficiaries and Beneficiaries

Figures 4 to 6 show the labour market status of non-beneficiaries (i.e. persons who did not engage in an EGF supported intervention) and beneficiaries in the three Programmes in March 2013. The data underlying the figures are presented in Annex 2. The predominant trend evident across all three Programmes is the higher proportions of beneficiaries than non-beneficiaries that are unemployed and the lower proportions that are categorised as “Other”. The differences in the proportions unemployed are notable in that the proportions unemployed among beneficiaries are in all cases double those found among non-beneficiaries.

Small differences in the proportions in employment are evident: in the case of the NACE 41 and NACE 43 Programmes the proportion of non-beneficiaries in employment is slightly higher than among beneficiaries, with the reverse being the case in the NACE 71 Programme.

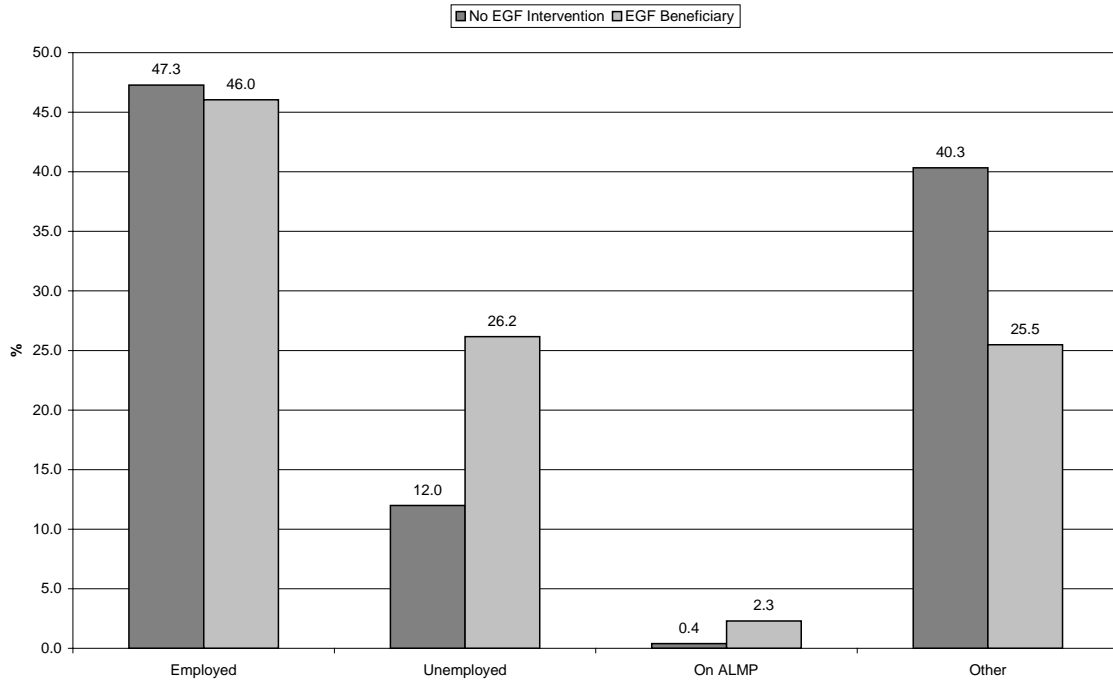


Figure 4 Labour Market Status of Non-Beneficiaries and Beneficiaries in the NACE 41 Programme in March 2013

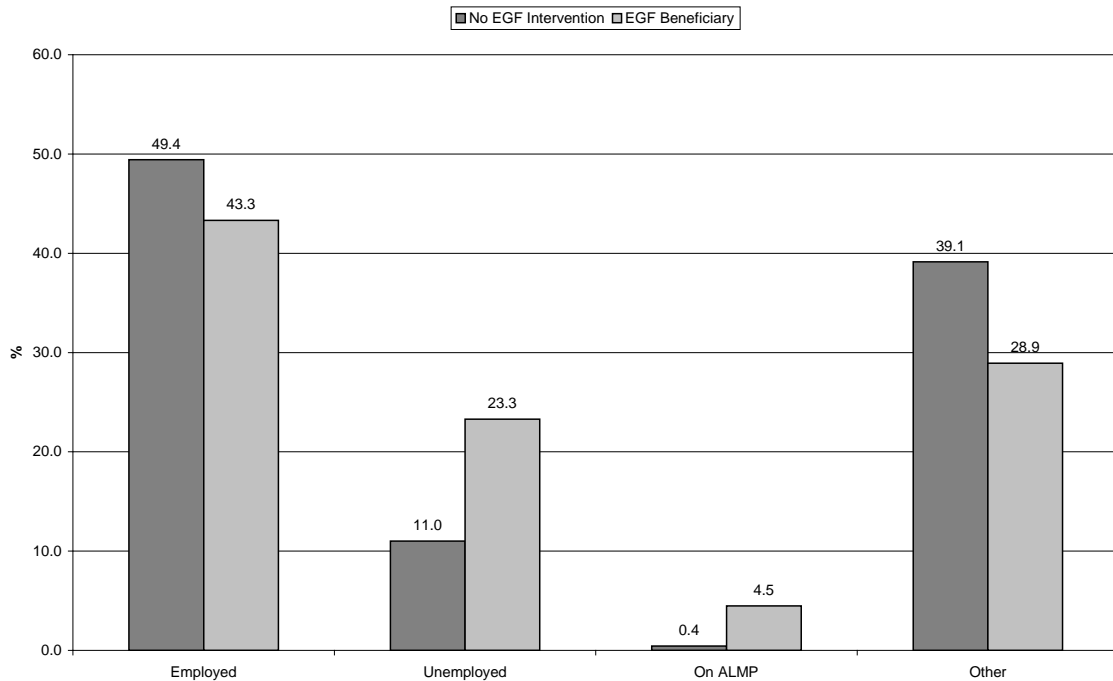


Figure 5 Labour Market Status of Non-Beneficiaries and Beneficiaries in the NACE 43 Programme in March 2013

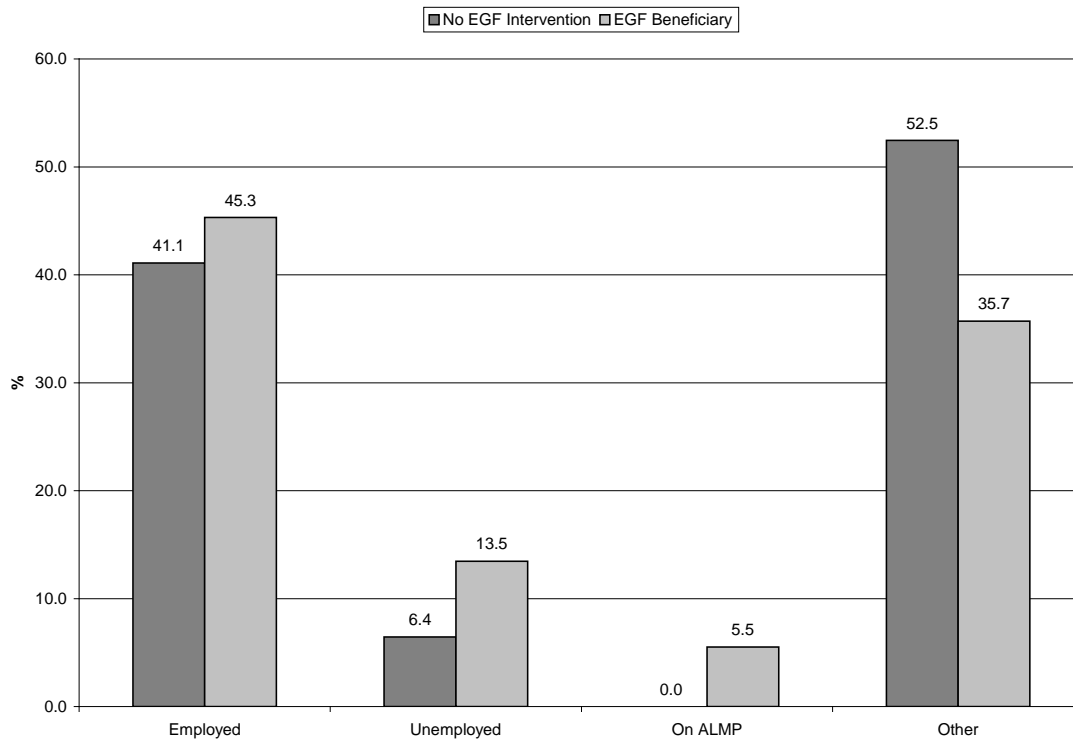


Figure 6 Labour Market Status of Non-Beneficiaries and Beneficiaries in the NACE 71 Programme in March 2013

Finally, it can be noted that higher proportion of non-beneficiaries than beneficiaries categorised as “Other” suggests that emigration may account for the differences observed. However, the actual numbers emigrating cannot be accurately quantified.

ANNEX 1**Labour Market Status of Beneficiaries in April 2010, November 2012
and March 2013**

NACE 41					
Number	Employed	Unemployed	On ALMP	Other	Total Number
Apr-10	627	1,758	15	562	2,962
Nov-12	1,346	732	75	809	2,962
Mar-13	1,364	775	68	755	2,962
%	Employed	Unemployed	On ALMP	Other	Total %
Apr-10	21.2	59.4	0.5	19.0	100.0
Nov-12	45.4	24.7	2.5	27.3	100.0
Mar-13	46.0	26.2	2.3	25.5	100.0

NACE 43					
Number	Employed	Unemployed	On ALMP	Other	Total Number
Apr-10	508	947	16	517	1,988
Nov-12	834	473	89	592	1,988
Mar-13	861	463	89	575	1,988
%	Employed	Unemployed	On ALMP	Other	Total %
Apr-10	25.6	47.6	0.8	26.0	100.0
Nov-12	42.0	23.8	4.5	29.8	100.0
Mar-13	43.3	23.3	4.5	28.9	100.0

NACE 71					
Number	Employed	Unemployed	On ALMP	Other	Total Number
Apr-10	145	252	6	87	490
Nov-12	212	81	28	169	490
Mar-13	222	66	27	175	490
%	Employed	Unemployed	On ALMP	Other	Total %
Apr-10	29.6	51.4	1.2	17.8	100.0
Nov-12	43.3	16.5	5.7	34.5	100.0
Mar-13	45.3	13.5	5.5	35.7	100.0

Note: ALMP = Active Labour Market Programme

ANNEX 2**Labour Market Status of Non-Beneficiaries and Beneficiaries
in March 2013**

NACE 41					
Number	Employed	Unemployed	On ALMP	Other	Total Number
No EGF Intervention	729	185	6	622	1,542
EGF Beneficiary	1,364	775	68	755	2,962
%	Employed	Unemployed	On ALMP	Other	Total %
No EGF Intervention	47.3	12.0	0.4	40.3	100.0
EGF Beneficiary	46.0	26.2	2.3	25.5	100.0

NACE 43					
Number	Employed	Unemployed	On ALMP	Other	Total Number
No EGF Intervention	346	77	3	274	700
EGF Beneficiary	861	463	89	575	1,988
%	Employed	Unemployed	On ALMP	Other	Total %
No EGF Intervention	49.4	11.0	0.4	39.1	100.0
EGF Beneficiary	43.3	23.3	4.5	28.9	100.0

NACE 71					
Number	Employed	Unemployed	On ALMP	Other	Total Number
No EGF Intervention	134	21	0	171	326
EGF Beneficiary	222	66	27	175	490
%	Employed	Unemployed	On ALMP	Other	Total %
No EGF Intervention	41.1	6.4	0.0	52.5	100.0
EGF Beneficiary	45.3	13.5	5.5	35.7	100.0

Note: ALMP = Active Labour Market Programme