



**REPORT ON THE IMPLEMENTATION
OF THE THREE EGF CONSTRUCTION PROGRAMMES
FOR THE PERIOD 19th DECEMBER 2011 TO 27th APRIL 2012**

prepared for

**EGF Managing Authority
Department of Education and Skills**

by the

**EGF Administrative and Technical Support Unit
(WRC Social and Economic Consultants)**

25-05-2012

Table of Contents

	page
EXECUTIVE SUMMARY	iii
1. INTRODUCTION	1
1.1 The Cohort of EGF Eligible Workers and Apprentices Receiving Letters of Notification of EGF Eligibility	1
1.2 Informing the Cohort of EGF Eligible Workers and Apprentices	2
1.3 Scope and Purpose of Report	3
2 AGGREGATE INDICATORS FOR UPTAKE AND DELIVERY OF SERVICES	3
2.1 Website Statistics for www.egf.ie	3
2.2 Online Applications for EGF Training Grants	4
2.3 Number of Eligible Workers and Apprentices Accessing the Services Provided by the EGF Construction Contact Centre	4
3 OUTPUT INDICATORS	7
3.1 EGF Training Grants	7
3.2 Status of Construction Workers and Apprentices on 27 th April 2012	9
4 CONCLUSION	11

List of Tables

Table 1.1 EGF Eligible Construction Workers and Apprentices by EGF Construction Programme	2
Table 2.1 EGF Online Applications Submitted by EGF Construction Programme (19-12-2011 to 27-04-2012)	4
Table 2.2 Number of EGF Eligible Construction Workers and Apprentices in Each EGF Construction Programme Accessing the Services of the EGF Construction Contact Centre (19-12-2011 to 27-04-2012)	5
Table 2.3 Main Purpose of Initial Enquiry to EGF Construction Contact Centre	6
Table 3.1 Number of Eligible Persons within Each EGF Construction Programme Making at Least One EGF Training Grant Application and Securing Approval for at Least One EGF Training Grant Application by 27-04-2012	7
Table 3.2 Types of Training Courses Being Sought and Undertaken	8
Table 3.3 Intervention Status on 27-04-2012 of Persons Registered with the EGF Construction Contact Centre by EGF Construction Programme	9

List of Figures

Figure 2.1	Weekly Website Visits (19-12-2011 to 29-04-2012)	3
Figure 2.2	Weekly Number of Unique Eligible Individuals Accessing the Services of EGF Construction Contact Centre (19-12-2011 to 27-04-2012)	5

List of Annexes

Annex 1	Distribution of EGF Eligible Cohort by County of Residence	12
Annex 2	Number of Individuals Accessing Services of EGF Construction Contact Centre by County of Residence (19-12-2011 to 27-04-2012)	13
Annex 3	Number of Individuals Making at Least One EGF Training Grant Application and Number of Individuals Obtaining Approval for at Least One EGF Training Grant Application by County of Residence (19-12-2011 to 27-04-2012)	14

EXECUTIVE SUMMARY

A total of 808 persons from the cohort of construction workers and apprentices notified of their EGF eligibility accessed the services of the EGF Construction Contact Centre between the 19th December 2011 and the 27th April 2012. This figure corresponds to 9.2% of the 8,779 persons issued letters of notification of EGF eligibility on the 19th December 2011.

The main specific reasons for initially contacting the EGF Construction Contact Centre were to access EGF Training Grants (561 corresponding to 69.4% of all enquiries) and to access information about or seek a referral to VEC guidance courses (88 corresponding to 10.9% of all enquiries). All other enquiries made up the remaining 19.7% and, for the most part, they were of a general nature with very low numbers expressing interest in either third level options, FÁS mainstream provision, or enterprise supports.

Reflecting the above, a total of 575 persons had made at least one application for an EGF Training Grant on or before the 27th April and 337 persons had obtained approval for at least one application. The first of the foregoing figures corresponds to 71.2% of all persons contacting the EGF Construction Contact Centre and the second to 41.7%. The majority of the training being sought and undertaken with the assistance of EGF Training Grants is accredited by FETAC and covers skill development for work in, or allied to, specific sub-sectors within the broad construction sector.

Data on the intervention status of the 808 persons registered with the EGF Construction Contact Centre on the 27th April 2012 show that:

- (a) 152 (18.8%) persons were being case managed by the EGF Construction Contact Centre (mainly the processing of applications for EGF Training Grants);
- (b) 331 (41.0%) were either enrolled on a course (49), had started a course (158), or had completed a course (124); and,
- (c) 120 (14.9%) were engaged with or seeking engagement with a number of mainstream service providers (mainly the VECs and third level institutions).

These three groups account for three quarters (74.7%) of all persons contacting the EGF Construction Contact Centre on or before 27th April 2012. The remaining one quarter (25.3%) of persons registered with the EGF Construction Centre either had not yet sought a specific intervention or, for a number of reasons, were not interested in accessing an intervention funded by the EGF.

The overall pattern evident in the uptake of EGF supported interventions indicates that the eligible cohort perceives EGF Training Grants as a viable means of accessing training and, as a corollary, the more limited attractiveness of interventions being provided by mainstream service providers. However, the latter must be seen in the

context of the limited period of eligibility available to persons informed of the EGF eligibility on 19th December 2011, with its emphasis up to that time more so on traditional responses.

1 INTRODUCTION

In June 2010, the EGF Managing Authority submitted an application, which was subsequently revised into three separate NACE 2 applications in February 2011, in respect of workers and apprentices made redundant in the construction sector. The applications sought support for 9,089 construction workers and apprentices made redundant between 1st July 2009 and 31st March 2010 in the following sectors:

- construction of buildings - NACE 41;
- specialised construction services - NACE 43; and,
- architectural and engineering services - NACE 71.

The EGF eligible redundant construction workers and apprentices were identified based on evidence of statutory redundancy payments (RP50) and on data from the apprenticeship database held by FÁS, respectively.

A range of supports were outlined in the three applications which were approved by the EU authorities on the 14th November 2011. They include:

- career guidance supports;
- training supports delivered by FÁS, including both on and off the job apprenticeship supports to allow redundant apprentices to progress their apprenticeships;
- providing EGF Training Grants where a particular training or education measure cannot be delivered by a public institution but can be through the private sector;
- further education and higher education supports delivered by the VECs and HEA funded institutions, respectively; and,
- enterprise and self-employment advice and guidance supports delivered by the County and City Enterprise Boards.

The three programmes will run until the 9th June 2012.

1.1 The Cohort of EGF Eligible Workers and Apprentices Receiving Letters of Notification of EGF Eligibility

An analysis of data concerning the 9,089 redundant construction workers and apprentices covered by the three EGF construction applications was undertaken in November 2011. The results of the analysis identified a number of duplicate entries and the cohort of EGF eligible construction workers and apprentices was revised to 8,925. A subsequent control identified one further ineligible person bringing the EGF eligible cohort to 8,924. Of that number, 8,779 EGF eligible clients were identified as having a home address in this jurisdiction and letters of notification of eligibility for EGF services were issued on the 19th December 2011 to all of these persons.

Table 1.1 shows the number of workers and apprentices in each of the three EGF Construction Programmes. Just over half (53.9%) of the eligible cohort is covered by the NACE 41 programme. This programme is targeted at workers and apprentices previously employed by companies involved in the construction of residential and non-residential buildings. Just over one third (36.8%) of the cohort is covered by the NACE 43 programme. This programme is targeted at workers and apprentices previously employed in companies providing a range of trades allied to construction (e.g. plastering, carpentry, painting, roofing etc.). The third programme (i.e. NACE 71) accounts for 9.3% of the eligible cohort and is targeted at workers previously employed in companies providing architectural and engineering services.

Table 1.1
EGF Eligible Construction Workers and Apprentices by EGF Construction Programme

	NACE 41	NACE 43	NACE 71	Total
Redundant Workers	4,060	1,646	816	6,522
Redundant Apprentices	669	1,588	0	2,257
Total	4,729	3,234	816	8,779
%	53.9	36.8	9.3	100.0

The distribution of the eligible cohort by county of residence is presented in Annex 1. It shows that almost one quarter (23.4%) of the eligible cohort resided in Dublin with a further 14.1% residing in Cork. Other large clusters of eligible workers and apprentices are found in counties bordering Dublin (notably Meath and Kildare). Smaller numbers are distributed across the remaining 22 counties.

1.2 Informing the Cohort of EGF Eligible Workers and Apprentices

As noted above, letters of notification of EGF eligibility were issued to 8,779 persons on the 19th December 2011. That date also saw the launch of a website (www.egf.ie) to provide additional information to redundant workers and apprentices on EGF supports. The EGF Construction Contact Centre commenced operations on the 19th December 2011. It provides advice and information to construction workers and apprentices who were notified of their eligibility for EGF support. It also processes applications for EGF Training Grants and Reimbursement of Fees Paid.¹

¹ EGF Training Grants are designed to cover fees for approved courses in private education and training companies. Approved courses lead to recognised qualifications that are relevant to pursuing employment in sectors where there are reasonable chances of getting a job or evidence of skills shortages. There are two types of approved courses: courses recognised and accredited by the Further Education and Training Awards Council (FETAC) and courses recognised and accredited by the Higher Education and Training Awards Council (HETAC). The maximum EGF Training Grant in the case of the former is €3,000 and in the case of the latter is €5,000. In all cases the grant is made payable to the institute, college, or company

1.3 Scope and Purpose of Report

This is the third report on the implementation of the three EGF Construction Programmes. It provides cumulative data from 19th December 2011 to 27th April 2012. The purpose of the report is to provide the EGF Managing Authority with data relevant to monitoring the implementation of the three EGF Construction Programmes. In that regard, this report identifies the interventions accessed by members of the eligible cohort during the reporting period and provides data on a number of performance indicators, particularly the number of eligible persons accessing EGF Training Grants. The intervention status of all persons accessing the services of the EGF Construction Contact Centre or interventions being implemented by mainstream service providers with EGF support is also presented.

2 AGGREGATE INDICATORS FOR UPTAKE AND DELIVERY OF SERVICES

2.1 Website Statistics for www.egf.ie

During the period between the 19th December 2011 and 29th April 2012 the total number of visits to www.egf.ie was 6,138. Excluding repeat visits the number of unique visits is 3,835.

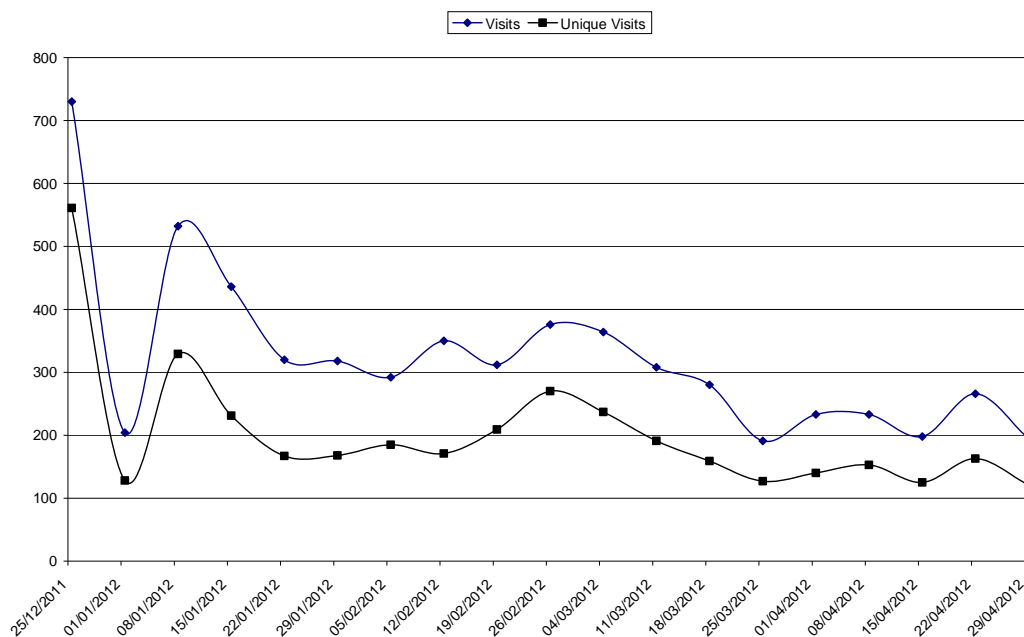


Figure 2.1 Weekly Website Visits (19-12-2011 to 29-04-2012)

providing the training course. EGF Training Grants may also be made available on a retrospective bases and are referred to in this report as Reimbursement of Fees Paid.

Following an initial peak in visits following the launch of the website the number of visits has declined somewhat over time. The trend over time is shown in Figure 2.1. Over the past four weeks the average number of weekly visits to www.egf.ie was 223 with the average number of unique visits being 141.

2.2 Online Applications for EGF Training Grants

A total of 280 eligible persons submitted 390 online applications for EGF Training Grants between 19th December 2011 and 27th April 2012 (see Table 2.1). The figures presented in Table 2.1 show that eligible workers in the NACE 71 Programme are more likely to have made an online application than their counterparts in either the NACE 41 or NACE 43 Programmes. Further information on the processing of these applications is presented in Section 4 which also includes postal applications.

Table 2.1
EGF Online Applications Submitted by EGF Construction Programme (19-12-2011 to 27-04-2012)

	Total Persons Making at Least One Application	% of Eligible Cohort Submitting at Least One Online EGF TG Application	Total Applications*
NACE 41	125	2.6	183
NACE 43	95	2.9	158
NACE 71	40	4.9	49
Total	280	3.2	390

* It should be noted that a number of EGF eligible applicants made more than one application.

2.3 Number of Eligible Workers and Apprentices Accessing the Services Provided by the EGF Construction Contact Centre

A total of 808 individuals (corresponding to 9.2% of the eligible cohort) accessed the services of the EGF Construction Contact Centre between 19th December 2011 and 27th April 2012. On a programme basis, eligible persons in the NACE 71 Programme have a higher rate of uptake of services than their counterparts in the other two programmes (see Table 2.2). Annex 2 presents a breakdown of the 808 EGF eligible individuals who have accessed the services of the EGF Construction Centre by county of residence.

Table 2.2
Number of EGF Eligible Construction Workers and Apprentices in Each EGF Construction Programme Accessing the Services of the EGF Construction Contact Centre (19-12-2011 to 29-04-2012)

	NACE 41	NACE 43	NACE 71	Total
Redundant Workers	437	136	97	670
Redundant Apprentices	36	102	0	138
Total	473	238	97	808
% of Eligible Cohort Accessing Services of EGF Construction Contact Centre	10.0	7.4	11.9	9.2

An analysis of the numbers contacting the EGF Construction Contact Centre on a weekly basis shows that while the number has declined relative to January 2012 there still continues to be a level of uptake indicating an ongoing, albeit low, level of demand for supports (see Figure 2.2). Over the four weeks ending 27th April 2012 the number of EGF eligible construction workers and apprentices contacting the EGF Construction Contact Centre has averaged 30 persons. However, based on the trend observed it is likely that the majority of EGF eligible construction workers and apprentices interested in accessing supports provided by the EGF have now already done so. As is indicated below, the main incentive continuing to attract eligible workers and apprentices is the availability of EGF Training Grants.

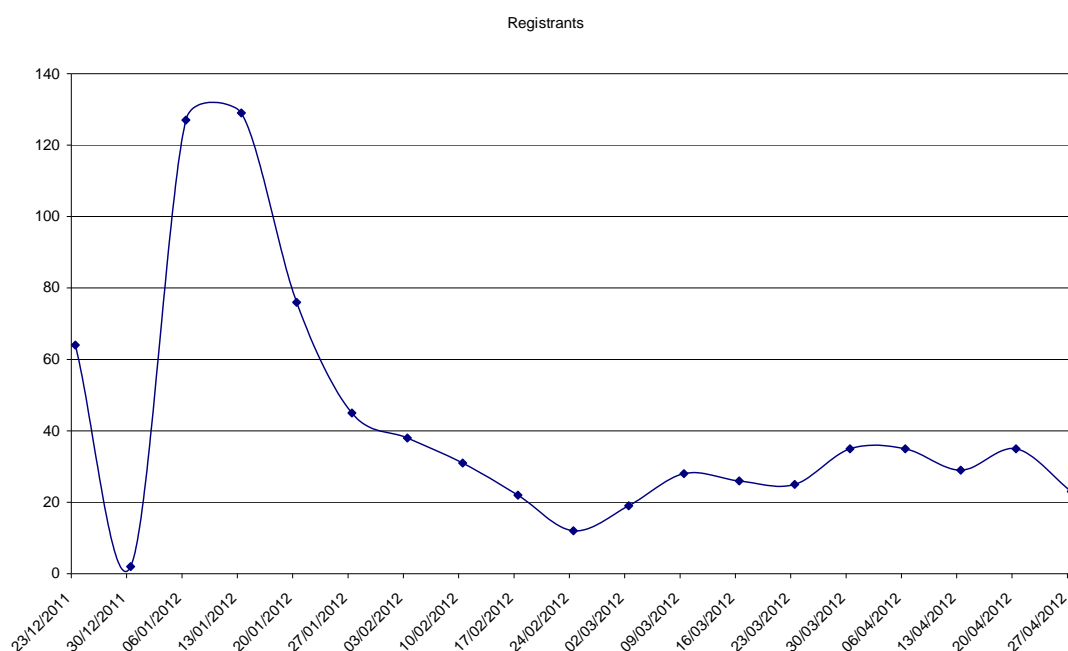


Figure 2.2 Weekly Number of Unique Eligible Individuals Accessing the Services of EGF Construction Contact Centre (19-12-2011 to 27-04-2012)

All calls to the EGF Construction Contact Centre are logged and the purpose of each initial call is noted. Examination of the reasons for first contact shows that the single largest category of calls made by EGF eligible individuals concern EGF Training Grants for FETAC and HETAC approved courses (see Table 2.3). Numbering 561, enquiries concerning these grants account for 69.4% of all queries.

Table 2.3
Main Purpose of Initial Enquiry to Construction Contact Centre

	Number	%
EGF Training Grant	561	69.4
VEC Guidance	88	10.9
Multiple Enquiries	58	7.2
General Enquiry	31	3.8
Higher Education (HEA)	31	3.8
EGF Training Grant Retrospective	23	2.9
FÁS Training	11	1.4
Enterprise Supports	5	0.6
Total	808	100.0

Numbering 88 (10.9% of all enquiries), the second largest category of enquiries were requests for information on guidance courses being provided by local VECs or seeking referral to a VEC guidance course.² Procedurally, all persons actually interested in pursuing a guidance course are referred by the EGF Construction Contact Centre to a Co-ordinator acting on behalf of local VECs who then case manages the contact between referred individuals and the relevant local VEC.

All other enquiries were made by smaller numbers of individuals and include general enquiries and enquiries that covered a number of types of support, reimbursement of course fees paid, access to higher education options, access to FÁS training, and access to enterprise supports.

² With EGF support Vocational Educational Committees (VEC) are offering a career planning course which is designed to develop career management skills. It covers topics such as the changing nature of work and assists participants to identify the skills needed to manage their career and improve their employment prospects. The course also provides practical guidance in job searching and preparing a CV. Participants receive three hours of one-to-one guidance.

3 OUTPUT INDICATORS

3.1 EGF Training Grants

Between the 19th December 2011 and 27th April 2012 a total of 545 individuals applied for at least one EGF Training Grant (FETAC), 7 for at least one EGF Training Grant (HETAC) and 67 made at least one claim for Reimbursement of Fees Paid. There is some overlap in these figures as a number of eligible persons made applications for more than one type of EGF Training Grant (e.g. a total of 40 individuals applied for a FETAC Training Grant and Reimbursement of Fees Paid). Taking this overlap into account a total of 575 individuals applied for at least one of the three types of EGF Training Grants. This figure corresponds to 71.2% of all EGF eligible construction workers and apprentices accessing the services of the EGF Construction Contact Centre. A breakdown of this figure by county of residence is provided in Annex 3.

Table 3.1
Number of Eligible Persons within Each EGF Construction Programme Making at Least One EGF Training Grant Application and Securing Approval for at Least One EGF Training Grant Application by 27-04-2012

	NACE 41	NACE 43	NACE 71	ALL
Number of Eligible Persons Making at Least One EGF Training Grant Application	342	158	75	575
Number of Eligible Persons Being Granted Approval for at Least One EGF Training Grant Application	205	83	49	337
Percentage of Eligible Persons Contacting the EGF Contact Centre Making at Least One EGF Training Grant Application	72.3	66.4	77.3	71.2
Percentage of Eligible Persons Contacting the EGF Construction Contact Centre Being Granted Approval for at Least One EGF Training Grant Application	43.3	34.9	50.5	41.7

Table 3.1 shows the results of an analysis examining applicants for at least one EGF Training Grant by EGF Construction Programme. As in the case of online applications noted above, it is among eligible persons in the NACE 71 Programme that the highest proportion of persons making at least one EGF Training Grant Application is found. In effect, over three quarters (77.3%) of all persons contacting the EGF Construction Contact Centre covered by the NACE 71 Programme did so in order to apply for an EGF

Training Grant. The corresponding proportion among persons in the NACE 41 Programme is 72.3% and in the NACE 43 Programme is 66.4%.

A total of 337 individuals secured approval for at least one of the three types of EGF Training Grants between 19th December 2011 and 27th April 2012. When approval rates are considered, it can be seen that EGF eligible individuals covered by the NACE 71 Programme also have a slightly higher approval rate than their counterparts in the other two EGF Construction Programmes.

Table 3.2
Types of Training Courses Being Sought and Undertaken

	%
Site Machinery (excavator, forklift, dumper, cranes)	13.2
Heavy Goods Vehicle (HGV) Licence	12.5
Health and Safety, Safe Pass, First Aid	8.0
Water Metering	7.6
Management Related Courses	6.0
Information Technology Related Courses	5.0
Courses Approved by the Oil Firing Technical Association (OFTEC)	4.9
Gas Appliances Installation / Servicing	4.2
Finance, Accounting, and Payroll Related	3.8
Computed Aided Design (CAD)	3.5
Personal and Leisure Service Occupations	3.2
Domestic Appliance Maintenance / Servicing	3.1
Building Energy Rating (BER)	3.0
Electrical, Lighting, Alarms	2.9
Passive House Related	2.7
Special Needs Assistant, Carer	2.2
Sports, Social, and Leisure Related	2.1
CCTV and Satellite Installation	1.7
Welding	1.6
Construction, Scaffolding	1.1
Underground services	1.1
Security	1.0
Water Harvesting	1.0
Wind Energy Related Courses	1.0
Third Level Courses	0.9
Septic Tank (Installation / Inspection)	0.9
Traffic Management, Signage	0.8
Childcare	0.7
Literacy	0.5
All	100.0

Table 3.2 provides an indication of the types of training being sought and undertaken by all persons who have submitted an application for an EGF Training Grant. In overall terms, the majority of the training being sought and undertaken covers skill development for work in specific sub-sectors within the broad construction sector or in occupations allied to construction (e.g. water metering and harvesting, septic tank installation and servicing, servicing of appliances, welding, electrical installation and energy rating of buildings). Courses leading to licenses to drive various types of plant machinery and heavy goods vehicles are popular choices as are courses leading to certification in health and safety practices and management.

3.2 Status of Construction Workers and Apprentices on 27th April 2012

In broad terms, the 808 persons accessing the services of the EGF Construction Contact Centre between the 19th December 2011 and 27th April 2012 can be categorised into one of five groups based on their intervention status on the 27th April 2012 (see Table 3.3).

Table 3.3
Intervention Status on 27-04-2012 of Persons Registered with the EGF Construction Contact Centre by EGF Construction Programme

	NACE 41	NACE 43	NACE 71	Total
Being Processed / Case Managed	93	42	17	152
Enrolled on Course	32	13	4	49
Participating in Course	101	35	22	158
Course Completed	73	33	18	124
Waiting for VEC Guidance	12	4	3	19
Participating in VEC Guidance	19	4	3	26
Completed VEC Guidance	3	6	1	10
HEA Referrals and Engagement	20	14	10	44
FÁS Referrals and Engagement	5	3	0	8
Recommencing FAS Apprenticeship	2	4	0	6
CEB Referrals	4	2	1	7
Awaiting action from client	79	49	16	144
Not Interested / Other	30	29	2	61
Total	473	238	97	808
% of Eligible Cohort Registered with EGF Construction Contact Centre	10.0	7.4	11.9	9.2

The first group comprises persons being actively case managed by the EGF Construction Contact Centre. Numbering 152 persons, they account for 18.8% of all persons accessing the services of the EGF Construction Contact Centre between 19th December 2011 and 27th April 2012. In many instances the main issue being actively managed is the processing of an EGF Training Grant application and, consequently, it can be expected that persons in this group will access training once approval has been granted.

The second group comprises 331 persons (corresponding to 41.0% of all persons contacting the EGF Construction Contact Centre) who are either enrolled for a specific training course (49), have actually started a course (158), or have completed at least one course (124).

The third group comprises persons at various stages of engagement in terms of accessing interventions provided by VECs (guidance courses) and other mainstream service providers. Numbering 120, these account for 14.9% of all persons accessing the services of the EGF Construction Contact Centre between 19th December 2011 and 27th April 2012. There are two sub-groups within this group:

- a total of 55 persons (corresponding to 6.8% of all persons contacting the EGF Construction Contact Centre) who are either scheduled to participate in a VEC guidance course (19), are on a guidance course (26), or have completed a guidance course (10); and,
- a total of 65 persons (corresponding to 8.0% of all persons contacting the EGF Construction Contact Centre) who are at various stages of engagement with mainstream service providers including HEA institutions, FÁS and CEBs.

The fourth group comprises persons who have accessed the services of the EGF Construction Centre at some point prior to 27th April 2012 but have not sought or engaged in a specific intervention. Numbering 144, these account for 17.8% of all persons accessing the services of the EGF Construction Contact Centre between the 19th December 2011 and 27th April 2012. The likelihood of these persons actually participating in an intervention is largely dependent on them re-engaging with the EGF Construction Contact Centre.

The fifth and final group comprises persons who have declared that, for a variety of reasons, they are not interested or no longer interested in pursuing an intervention with the assistance of the EGF. It includes persons who stated they are no longer interested in an intervention, persons stating they are retired, sick, or are emigrating, persons in employment, and three persons found to be ineligible. Numbering 61, they account for 7.5% of all persons accessing the services of the EGF Construction Contact Centre between 19th December 2011 and 27th April 2012.

4 CONCLUSION

Two main trends are evident from the data presented in this report.

First, despite a decrease in the number of EGF eligible construction workers and apprentices seeking to access EGF supported interventions relative to January 2012, the average number seeking such supports continues to be of the order of 30 persons a week. While this is likely to continue into May, the approach of the closing date for interventions under the three EGF Construction Programmes (i.e., 9th June 2012) is likely to limit further uptake.

Second, as of the 27th April 2012, almost three quarters (71.2%) of all registrants with the EGF Construction Contact Centre were seeking access to at least one of the three types of EGF Training Grants and 41.7% had been granted approval for at least one. This indicates that the eligible cohort perceives the EGF Training Grants - particularly grants for FETAC courses - as a viable means of accessing training and, as a corollary, the more limited attractiveness of interventions being provided by mainstream service providers. However, the latter must be seen in the context of the limited period of eligibility available to persons informed of their EGF eligibility on 19th December 2011, with its emphasis up to that time more so on traditional responses.

Annex 1
Distribution of EGF Eligible Cohort by County of Residence

	Number	%
Carlow	196	2.2
Cavan	162	1.8
Clare	179	2.0
Cork	1,238	14.1
Donegal	190	2.2
Dublin	2,056	23.4
Galway	391	4.5
Kerry	274	3.1
Kildare	483	5.5
Kilkenny	256	2.9
Laois	179	2.0
Leitrim	52	.6
Limerick	374	4.3
Longford	45	.5
Louth	254	2.9
Mayo	239	2.7
Meath	422	4.8
Monaghan	88	1.0
Offaly	125	1.4
Roscommon	94	1.1
Sligo	85	1.0
Tipperary	356	4.1
Waterford	258	2.9
Westmeath	150	1.7
Wexford	373	4.2
Wicklow	260	3.0
Total	8,779	100.0

Annex 2
Number of Individuals Accessing Services of EGF Construction Contact Centre by
County of Residence (19-12-2011 to 27-04-2012)

	Number	%
Carlow	21	2.6
Cavan	9	1.1
Clare	20	2.5
Cork	89	11.0
Donegal	11	1.4
Dublin	181	22.4
Galway	31	3.8
Kerry	23	2.8
Kildare	48	5.9
Kilkenny	28	3.5
Laois	21	2.6
Leitrim	9	1.1
Limerick	42	5.2
Longford	1	0.1
Louth	26	3.2
Mayo	21	2.6
Meath	50	6.2
Monaghan	6	0.7
Offaly	14	1.7
Roscommon	9	1.1
Sligo	10	1.2
Tipperary	28	3.5
Waterford	20	2.5
Westmeath	11	1.4
Wexford	50	6.2
Wicklow	29	3.6
Total	808	100.0

Annex 3
Number of Individuals Making at Least One EGF Training Grant Application and
Number of Individuals Obtaining Approval for at Least One EGF Training Grant
Application by County of Residence (19-12-2011 to 27-04-2012)

	Number of Eligible Persons Making at Least One EGF Training Grant Application	Number of Eligible Persons Being Granted Approval for at Least One EGF Training Grant Application
Carlow	11	5
Cavan	7	4
Clare	13	9
Cork	63	37
Donegal	9	4
Dublin	122	85
Galway	19	6
Kerry	20	9
Kildare	36	25
Kilkenny	20	10
Laois	13	9
Leitrim	8	4
Limerick	31	21
Longford	0	0
Louth	17	10
Mayo	17	12
Meath	30	12
Monaghan	4	2
Offaly	12	8
Roscommon	4	1
Sligo	8	5
Tipperary	20	9
Waterford	14	9
Westmeath	9	5
Wexford	45	25
Wicklow	23	11
Total	575	337